

# THE ETIHAD



4



12.5m



2



233m<sup>2</sup>

## HOME DESIGN

### *There's no place like home*

Designed for 12.5m wide frontage blocks, this home features 4 bedrooms, 2 bathrooms, a large home theatre and an IT nook.

The Kitchen has gourmet Westinghouse 900mm appliances as well as overhead cupboards and a laminated pantry.

The kitchen overlooks the open plan living area as well as alfresco, creating an excellent space for entertaining.

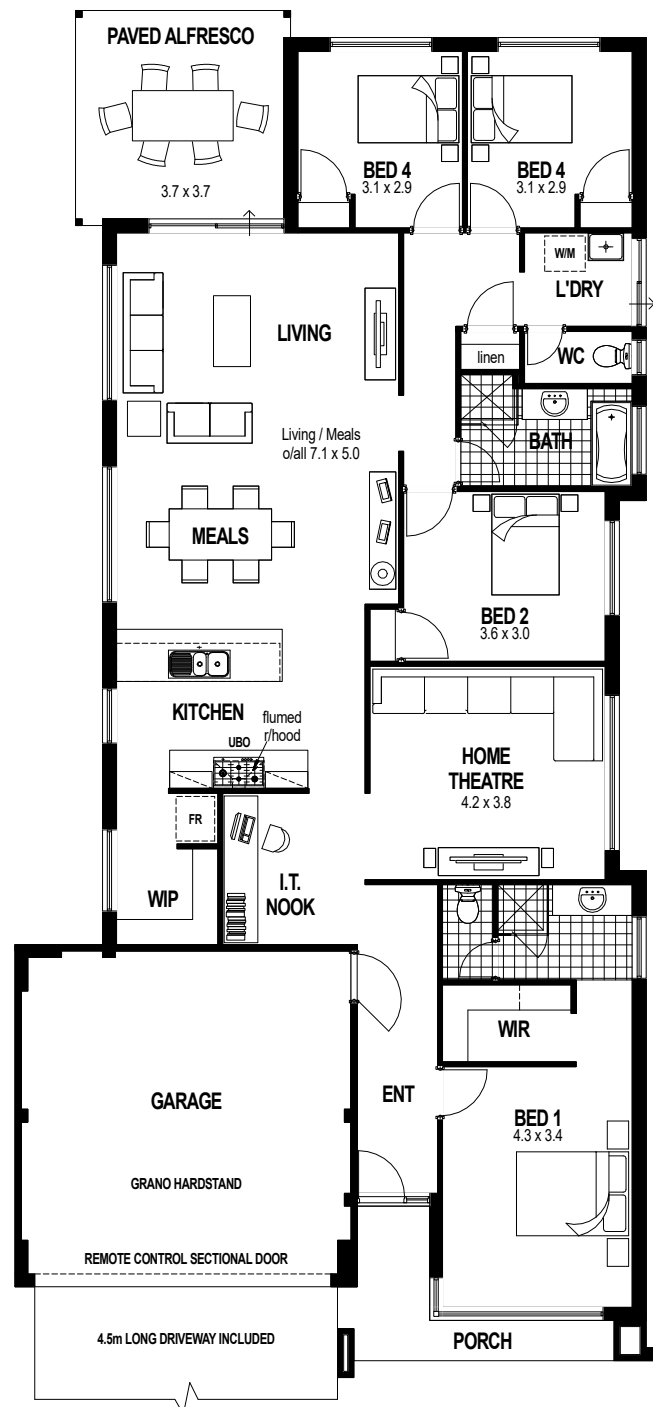
### *All that good stuff*

- Lifetime structural guarantee
- ISO9001 Quality Certification
- Australian made products
- Leading quality first home
- Free finance advisory service
- WA owned independent builder
- Quality fixtures throughout
- Fast construction times
- Built using trusted brands

**For detailed inclusions and other information, chat to our team today.**

**6314 3444**

**[dreamstarhomes.com.au](http://dreamstarhomes.com.au)**



## DreamStart



Your **dream home** starts here.

BC 8867